

Turtle Instructions_(November 25, 2017)

Many folks at the Quilting Season, especially Carol Repasky, Jim Duff, and Shelly Coburn, participated in making patterns and working out the methods to make these turtles and ways to streamline the process.

These instructions and diagrams for the templates were prepared by Mary M. Hogan.

Instructions available for download at <http://www.marymhogan.com/freestuff.php>



Overview

Tips: Use a walking foot due to the thick layers of fleece. Use ½" seam allowances unless specified otherwise.

Turtles have a removable shell with a zippered pocket. Items can be placed in the shell. The shell belly band allows it to be placed on the turtle. The turtle has a zippered back pocket.



Materials needed for turtle

| | | |
|---|---------------|------------------------------|
| Turtle body | fleece | About 1 yard |
| Turtle shell | fleece | 1/3 yard |
| Turtle shell lining | cotton fabric | About ½ yard |
| Belly band | fleece | 4" X 12" rectangle |
| Zippers | | 2 zippers, at least 10" long |
| Embroidery stabilizer; to use behind eyes, mouth and "M" on foot. | | Small pieces |
| Fiberfill stuffing | | |

Turtle Shell

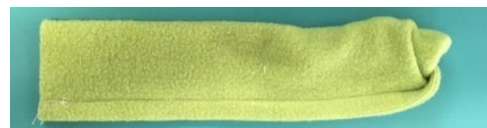
Belly Band:

Cut (1) 4"X 12" rectangle of fleece.

Fold in half lengthwise and sew along one edge.

Place a safety pin through the seam at one end and use that to turn the tube for the belly band right side out.

Flatten the belly band with the seam at the center on one side.



Shell:

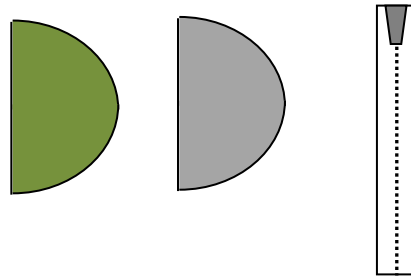
Underside of shell

Prepare templates

Cut (2) from fleece

Cut (2) from lining (cotton fabric)

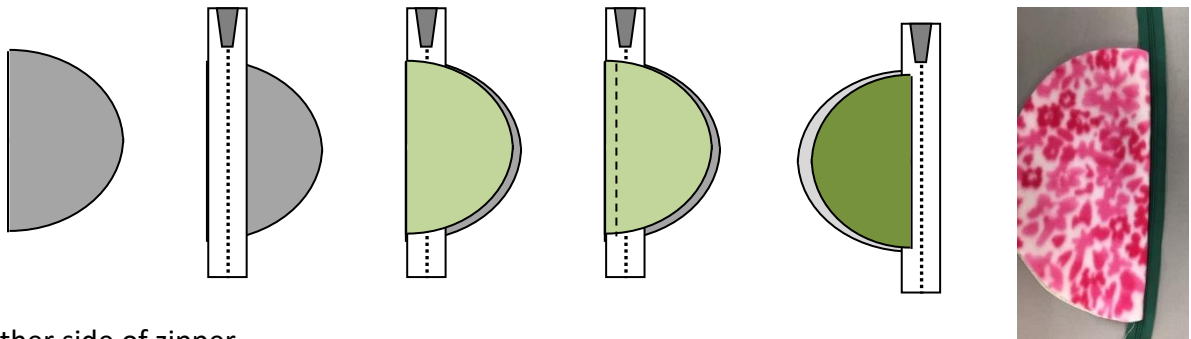
Zipper that is at least 12" long



Place zipper:

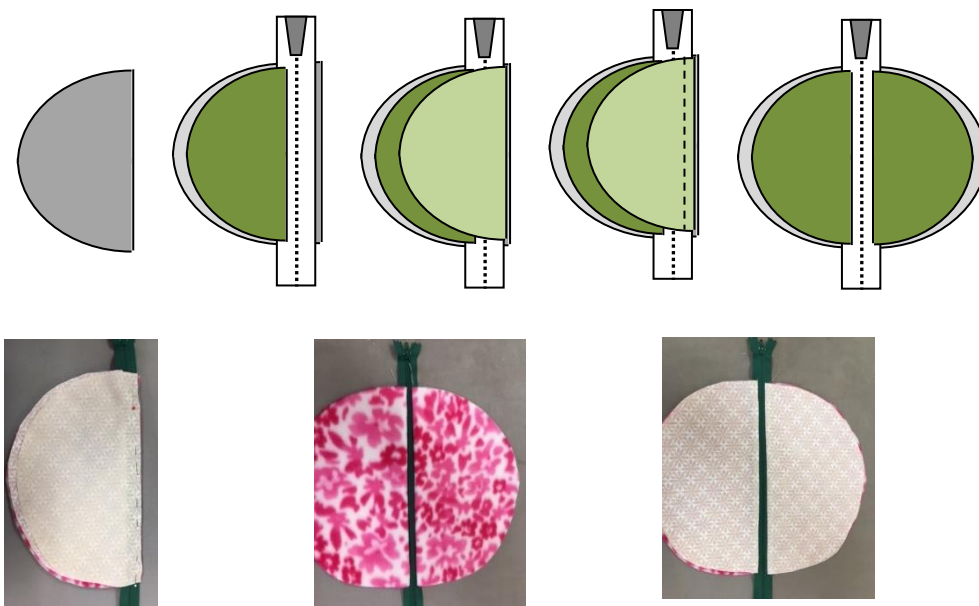
The zipper is sewn in so that the edges of the zipper are enclosed between the fleece and the lining fabric

Place lining right side up with flat side to the left. Place the zipper on top right side up as shown, lining up the left edges. Place the fleece right side down, lining up the left edges. Sew close to the zipper on the left side through all the layers.

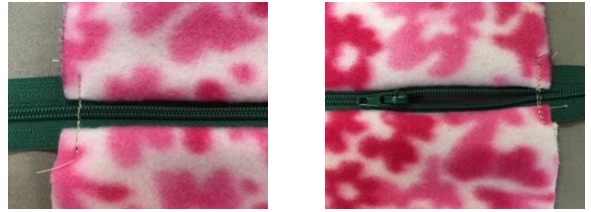


Sew other side of zipper.

Place lining right side up with the flat side to the right. Now place the sewn zipper on top with the right side up as shown, lining up the right edge of the lining with the right side of the zipper. Place the fleece right side down, lining up the right edges. Sew close to the zipper through all the layers.



Open the zipper at least a few inches. Sew across the end of the zipper on both sides. Trim zipper ends. The underside of the turtle shell is now completed.



Completing the shell:

Place the underside of the turtle shell with the zipper facing up. Position the belly band as shown, with the seam side down and each edge at the zipper. Make sure the zipper is open at least a few inches.



Position the fleece shell circle right side down on top, then place the liner circle right side up. Sew all around the edge through all the layers, taking extra care where the belly band and zipper are located due to the extra thickness. Trim the edges.

Layered before stitching



After stitching



After trimming

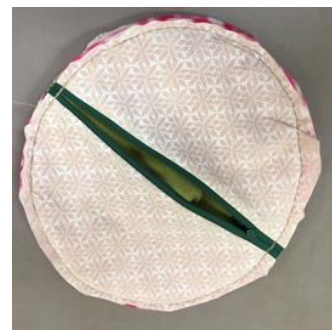


On the other side it looks like this:

Before trimming



After trimming

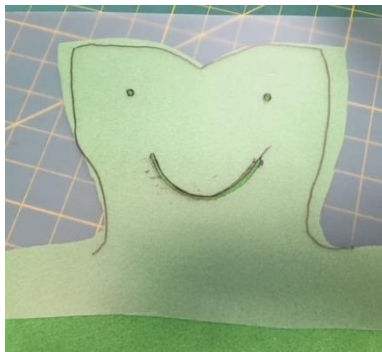
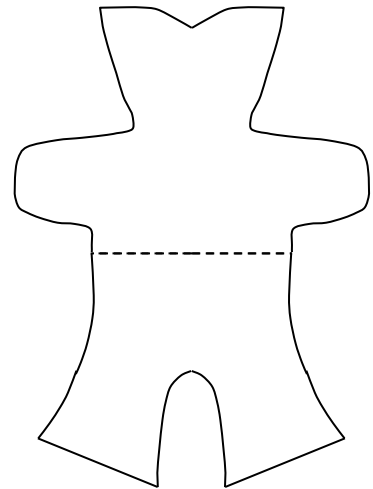


Prepare the turtle front:

Make the turtle front template using the template patterns. Trace both 1) Turtle Front Head and Arms and 2) Turtle Front Torso and Leg on folded paper as indicated. Cut out and join the template pieces at the dashed lines as shown.

Cut one fleece turtle front using template using a marker, such as a Sharpie, to draw around the template onto the fleece. Cut one red heart out of felt (or fleece or other fabric).

Using the face template, transfer the position of the eyes and mouth using a marker. For the mouth, just apply a few dots.



Mouth:

To make the mouth 1) embroider the mouth by hand or 2) use a zig zag or satin stitch to embroider the mouth with a sewing machine, placing a small piece of stiff embroidery stabilizer behind the fleece. Test using a small piece of fleece before stitching on the turtle.

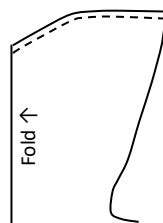
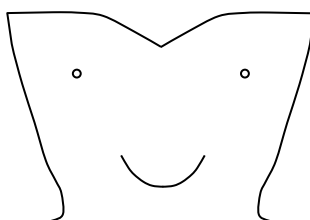
Eyes:

To make the eyes 1) embroider eyes by hand, 2) use commercial eyes that can be anchored into place, or 3) use a sewing machine satin stitch (use a small piece of stiff embroidery stabilizer behind the fleece).

Heart:

Applique the fabric or felt heart into place or use hand embroidery to outline a heart.

Fold the head in half with right sides together and sew the seam at the top to shape the head and face. Turn right side out. Set aside the body front.



Prepare the Turtle Back Templates and Fabric

Templates

Make the turtle front templates by transferring the patterns. The first three below are made by placing the pattern on folded paper.

The Turtle Upper Back

The Back Middle Body

The Turtle Lower Body Back (top portion)

Cut (2) of the Turtle Lower Body Back leg and foot and join them to the Turtle Body Back (top portion) at the dashed lines.

Fabric

Cut (1) fleece upper back section

Cut (1) fleece middle back section

Cut (1) fleece lower back section

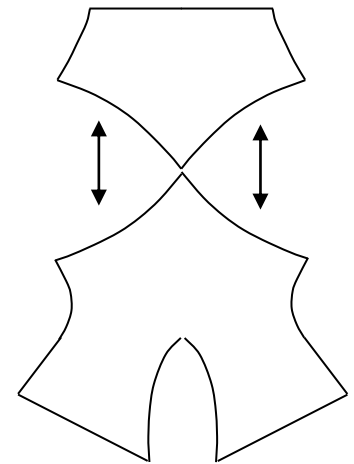
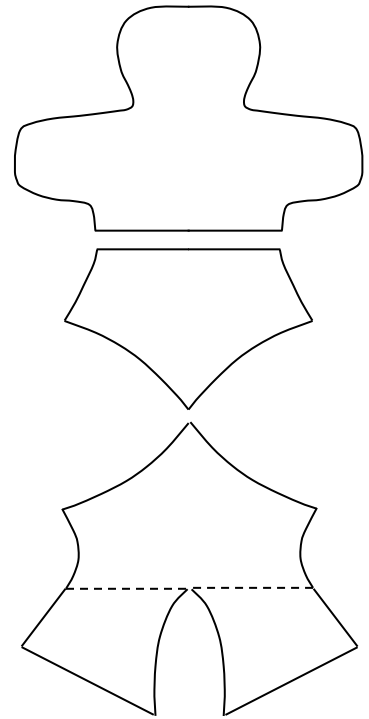
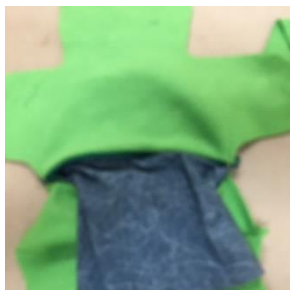
Cut (2) 9" square pieces of cotton pocket fabric.

Constructing the Turtle Body Back

Sew the Back Middle Body and Back Lower Body together along the curved edges. Sew one side at a time. Put the right sides together and pin and sew; then repeat for the other side.

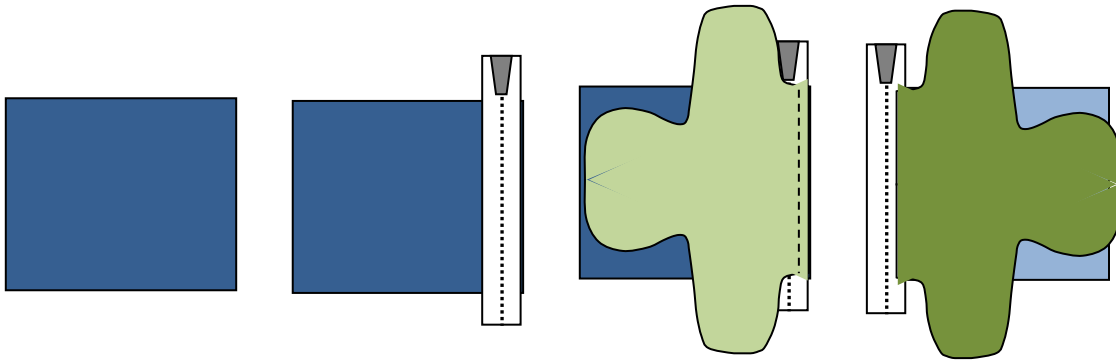
Turtle Back Zipper and Pocket

Turtles have a zippered pocket between the Turtle Upper Back and the bottom sections.



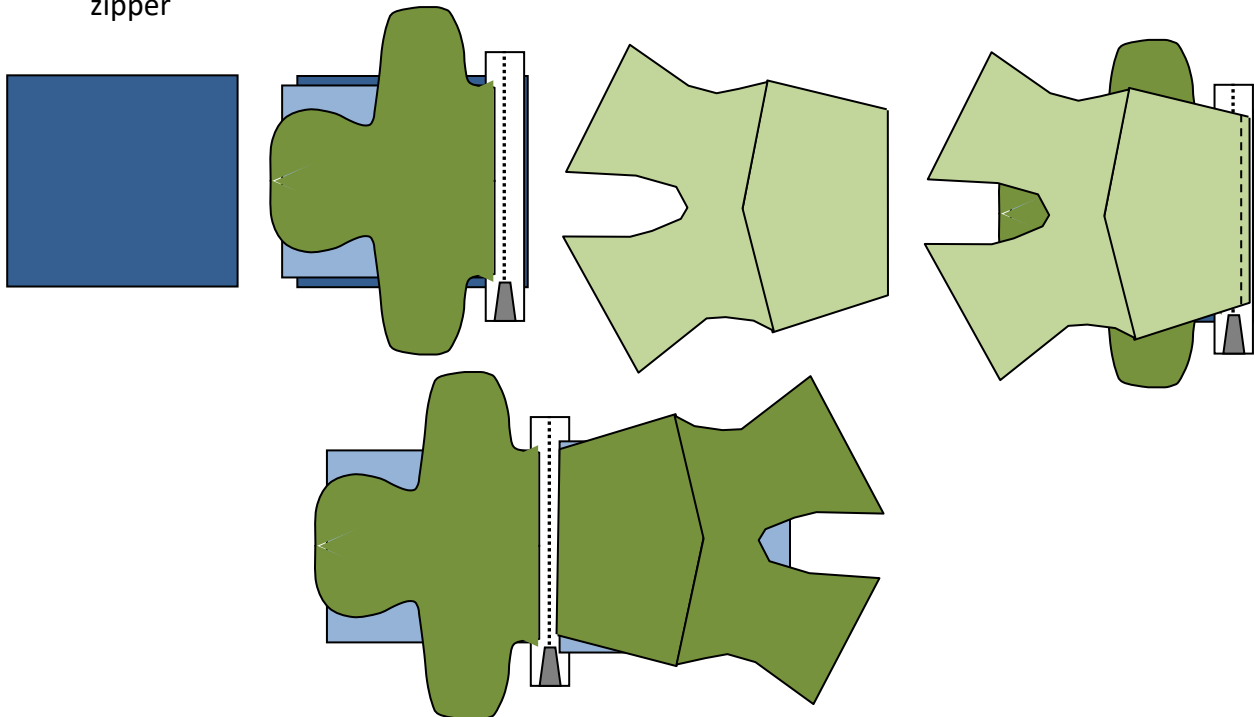
Sew zipper and one side of the pocket to the turtle back top

1. Place a piece of the pocket lining face up.
2. Place the zipper right side up so that zipper the ends extend beyond the edges of the pocket lining.
3. Position the turtle back head and arms right side down, lining up the bottom edge with the right side of the zipper as shown. Pin and sew into place.
4. Move the turtle fleece and the pocket out of the way.



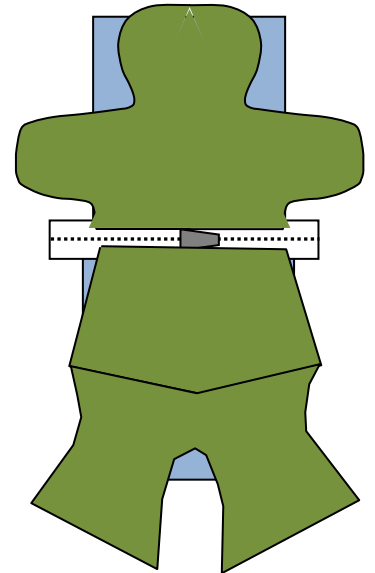
Sew zipper and one side of the pocket to the turtle back bottom

1. Place a piece of the pocket lining face up.
2. Position the turtle back head and arms right side down, lining up the bottom edge with the right side of the zipper as shown. Pin and sew into place.
3. Move the turtle fleece and the pocket out of the way.
4. Using the turtle top with the zipper attached and place the turtle bottom right side down with the edge at the right side of the zipper.
5. Place the turtle back bottom right side down with the edge at the right edge of the zipper



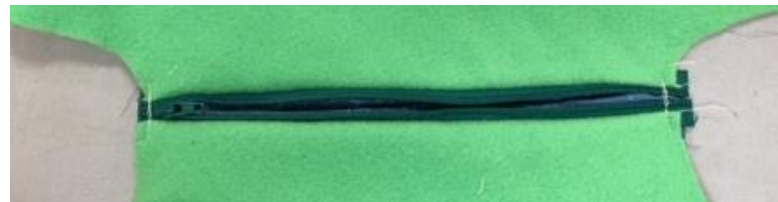
Open the zipper a few inches.

On the back side place the two pocket sections right side together.

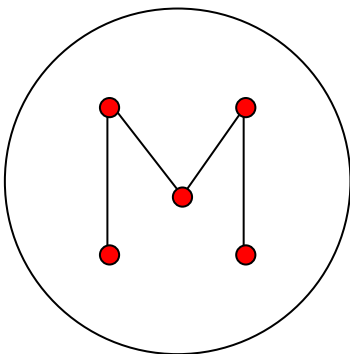


Sew the two side seams of the pocket. Leave the bottom sections open.

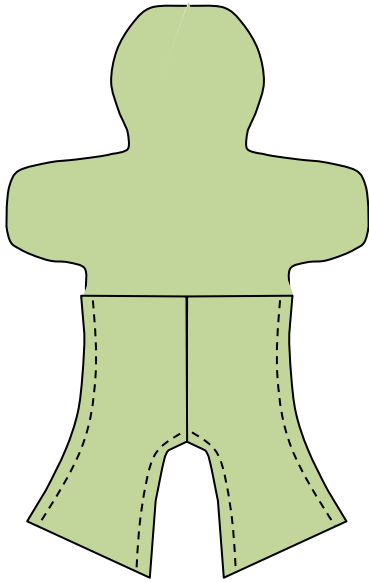
On the right side, sew each side of the zipper to secure the ends. Then trim the zipper ends.



Make several marks on one of the feet to provide a guide to making the M. Place a small piece of embroidery stabilizer behind the foot bottom, using a satin stitch to make the M on the foot bottom.

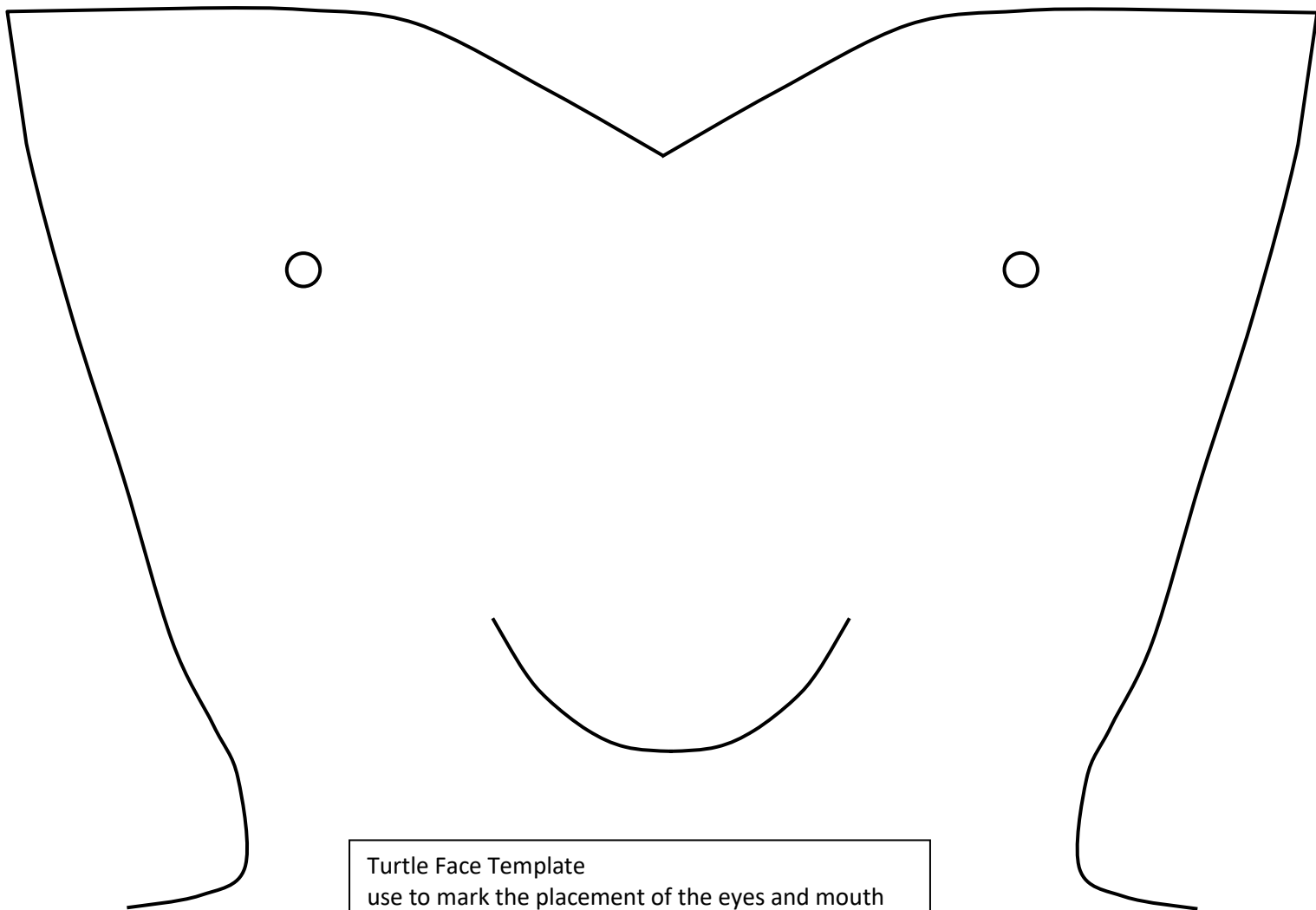


Place the turtle front right side down on the turtle back. Pin at the legs. Sew the just the legs as shown. Pin the feet right sides together onto the bottom of the leg openings. The top of the M should be pinned to the turtle front. Sew around the edges of the foot bottom.



Carefully pin the rest of the turtle front and back together, and sew all around the edges. Using the opening in the back pocket, turn the turtle right side out.

Stuff the turtle through the opening in the pocket. After stuffing the turtle, sew across the bottom of the back pocket and tuck it into the turtle.

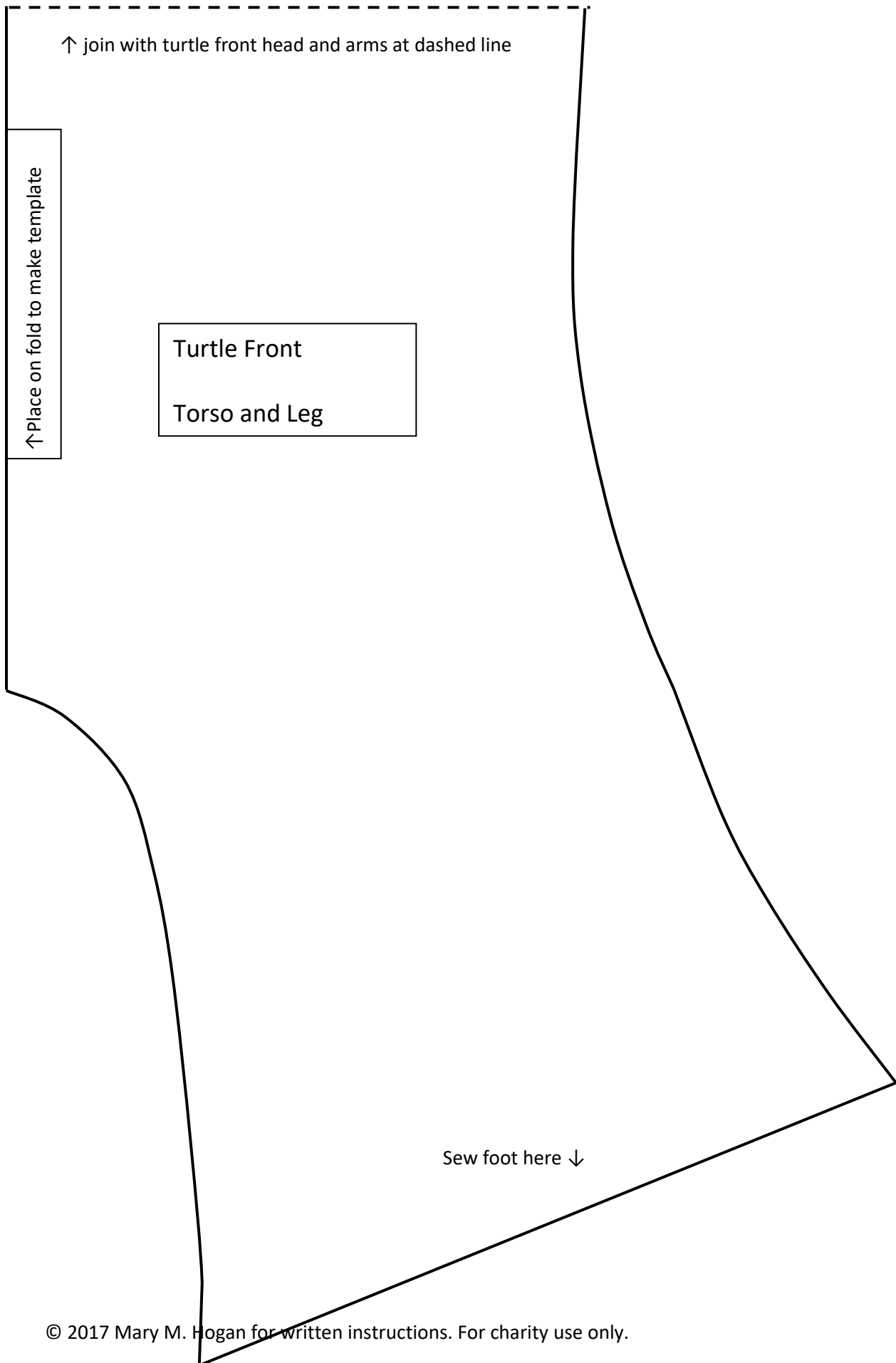


Turtle Front
Face, Head and Arms

↑ Place on fold to make template

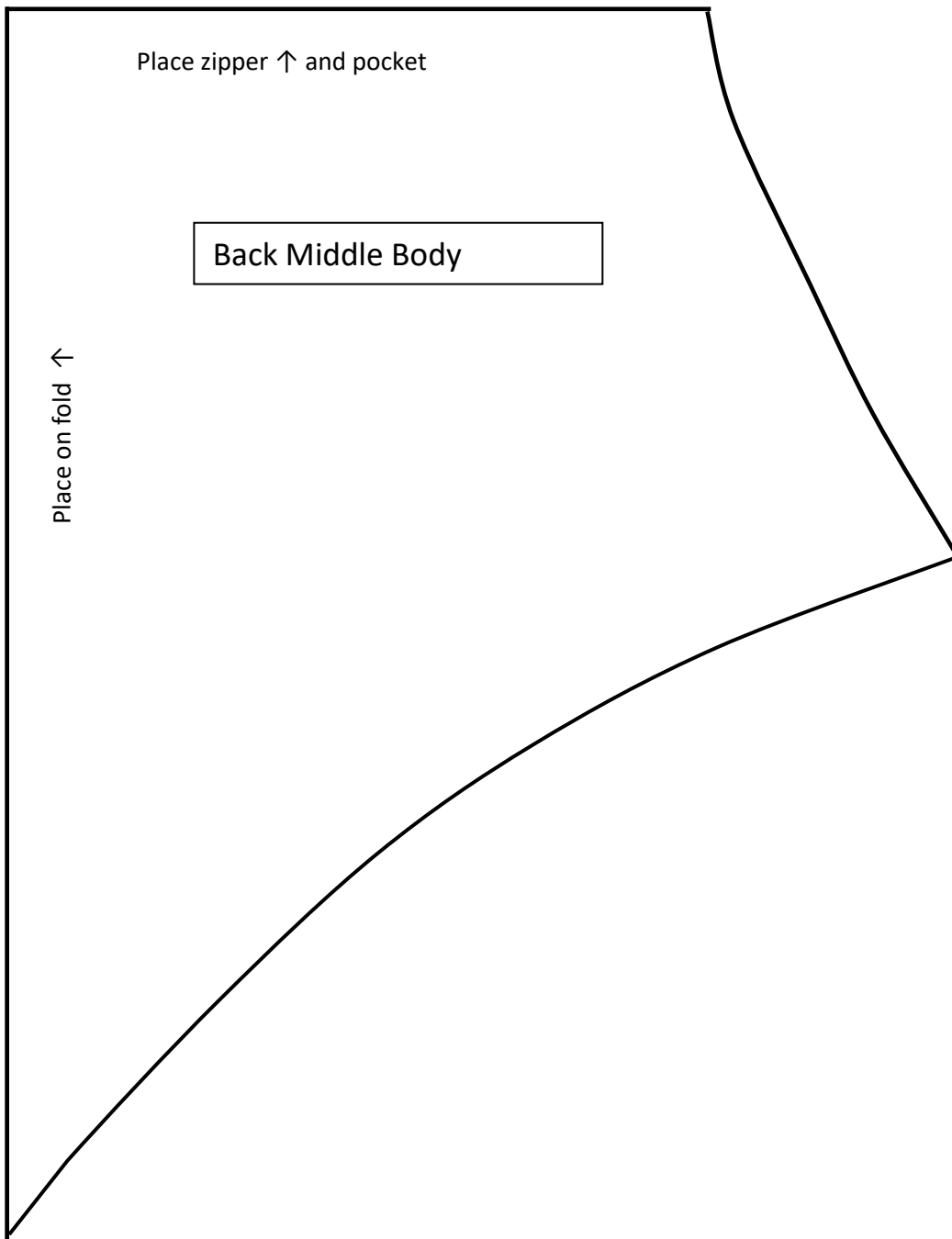
↓ join with turtle front torso and leg at dashed line

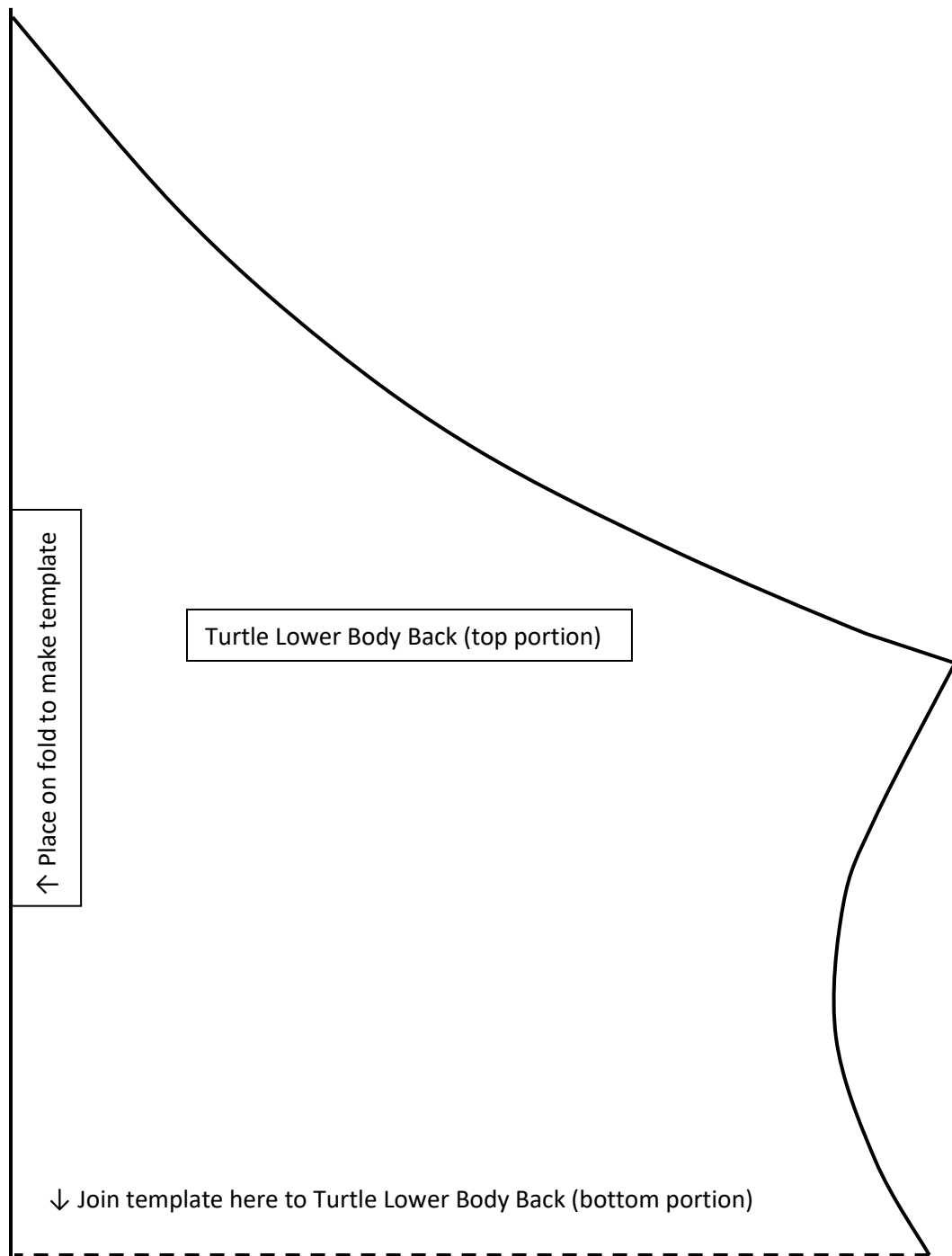
ty use only.

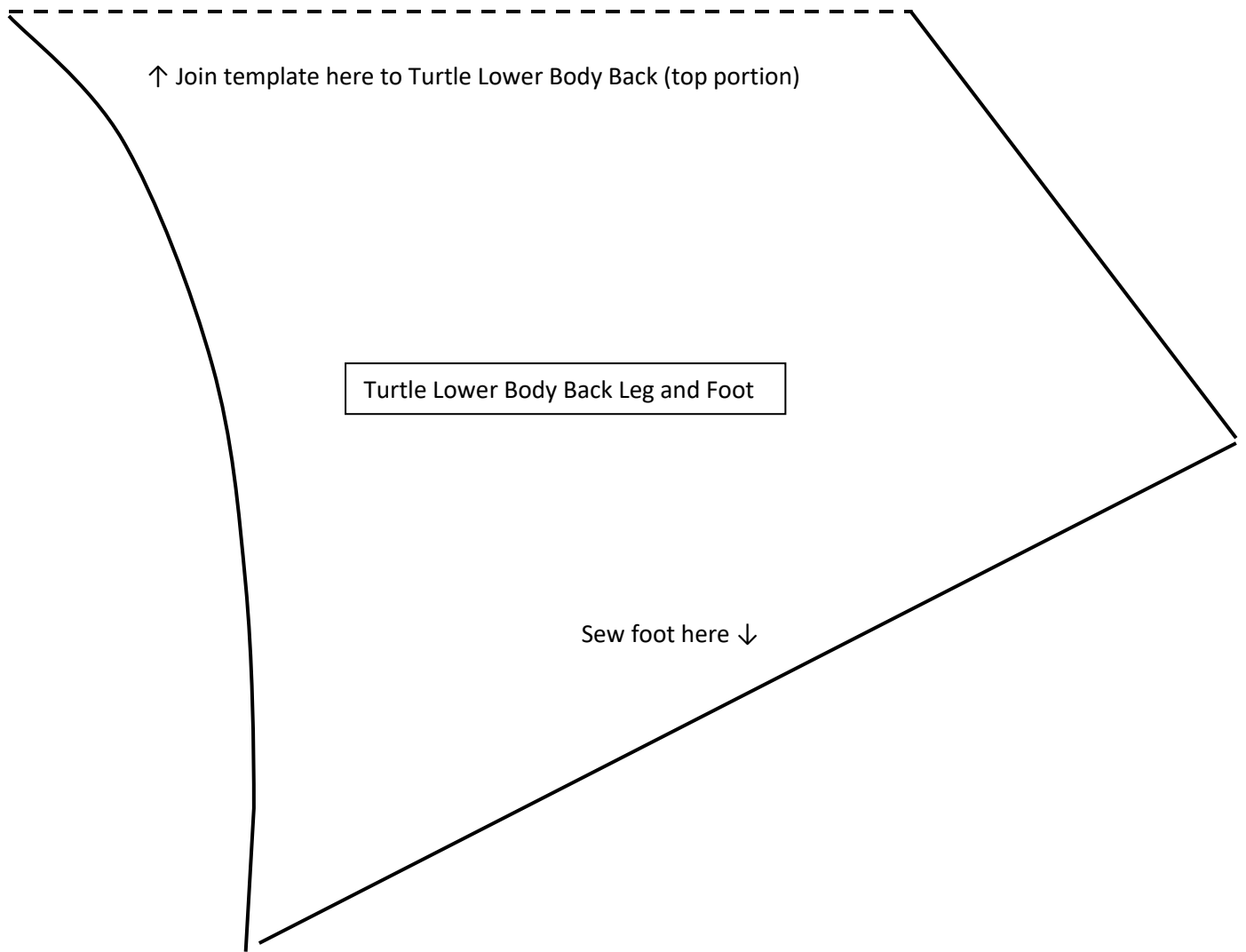


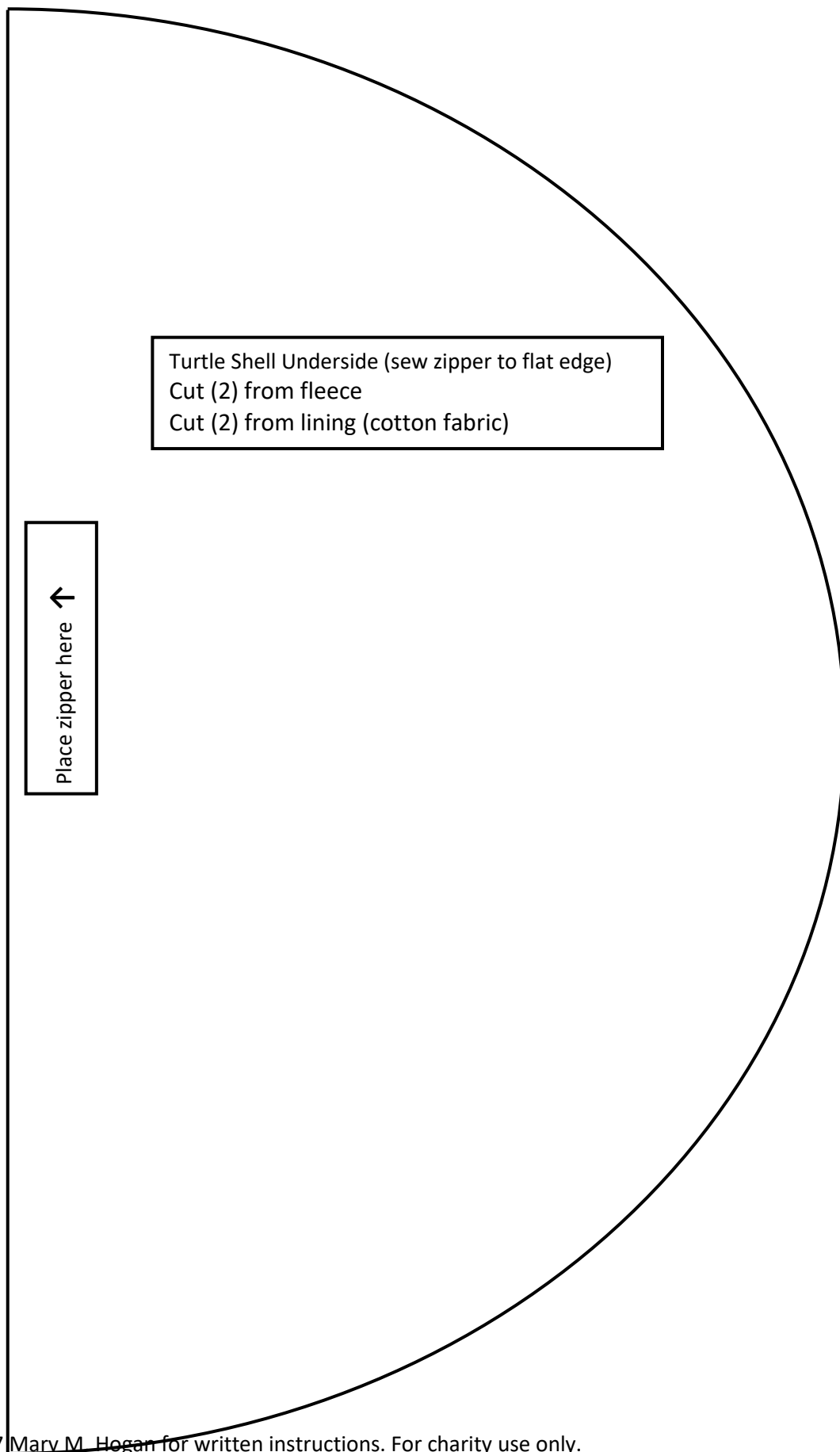
Place ↑ on fold to make template

Turtle Upper Back









Turtle Shell Underside (sew zipper to flat edge)
Cut (2) from fleece
Cut (2) from lining (cotton fabric)

Place zipper here ↑

